

PART OF THE N.W. 1/4, SEC. 29, T.7N., R.1W., S.L.B. & M.

184

NORTH OGDEN ESTATES

IN NORTH OGDEN CITY

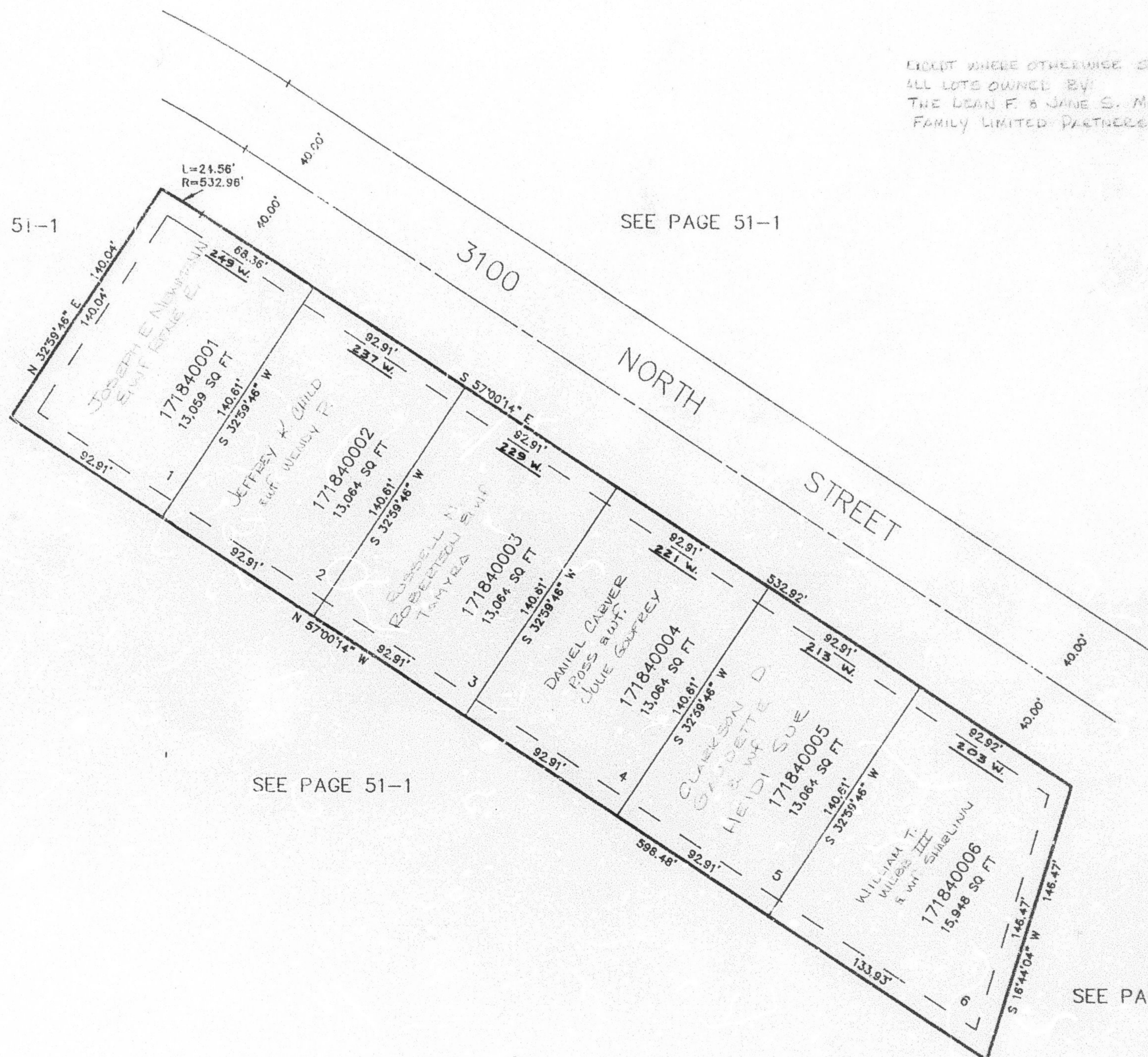
SCALE 1" = 50'

TAXING UNIT: 10

EXCEPT WHERE OTHERWISE SHOWN
ALL LOTS OWNED BY:
THE DEAN F. & JANE S. MORRIS
FAMILY LIMITED PARTNERSHIP

SEE PAGE 51-1

SEE PAGE 51-1



SEE PAGE 51-1

SEE PAGE 51-1

10' UTILITY & DRAINAGE EASEMENTS EACH
SIDE OF PROPERTY LINES AS INDICATED
BY DASHED LINES EXCEPT AS OTHERWISE
SHOWN.

FOR COMPLETE ENG DATA SEE
ORIGINAL DEDICATION PLAT IN
BOOK 34, PAGE 78 OF RECORDS.